

# SMO14HP-2

## High-Performance Oven Spec Sheet



Model Name / Order Part ID	SMO14HP-2/ SLFHP1422-H
Capacity	14.6 cu.ft. (413 liters)
Interior Dimensions (W x D x H)	44.0" x 20.8" x 30.0" 1117 x 528 x 762 mm
Exterior Dimensions (W x D x H)	59.0" x 28.0" x 57.0" 1499 x 711 x 1448 mm
Unit Weight	449 lb (203.7 kg)
Shipping Weight	563 lb (255 kg)
Shelves	6 standard, 14 max
Maximum Weight Per Shelf	75 lb (34 kg)
Permitted Total Load	450 lb (204 kg)
Standard Door Gasket	Snap-In Fiberglass Door Gasket
Access Port	N/A
Controls	Watlow EZ-Zone
Warranty	2 Year Limited Warranty
Interior Construction	300 series stainless steel
Exterior Construction	Painted Cold Roll Steel
Vertical Clearance	24" (632 mm)
Wall Clearance, Each Side	6" (152 mm)
Wall Clearance, Rear	12" (305 mm)
<b>Electrical, 50/60Hz, AC, 1Ø</b>	
Voltage	220V-240V
Full Load Amps	26.0
Nominal Power (watts @150°C)	3528
Recommended Breaker, Amps	30
Power Connection Type	Direct Hardwire
<b>Energy Consumption (kWh/day)</b>	
At 80°C	47.9
At 150°C	82.1
At 260°C	130
<b>Temperature Range 15°C above ambient to 260°C</b>	
Heat-Up Time — Minutes to 80°C	N/A
Heat-Up Time — Minutes to 150°C	14
Heat-Up Time — Minutes to 260°C	N/A
Recovery after Door Opening (30 sec.) - Minutes to 80°C	3
Recovery after Door Opening (30 sec.) - Minutes to 150°C	3
Recovery after Door Opening (30 sec.) - Minutes to 260°C	6
Recovery after Door Opening (60 sec.) - Minutes to 80°C	5
Recovery after Door Opening (60 sec.) - Minutes to 150°C	6
Recovery after Door Opening (60 sec.) - Minutes to 260°C	10
<b>Temperature Uniformity</b>	
At 80°C	1.5
At 150°C	2.5
At 260°C	5.5
<b>Air Flow Performance</b>	
Air Changes Per Hr at Max	304
Flow Rate (CFM)	51



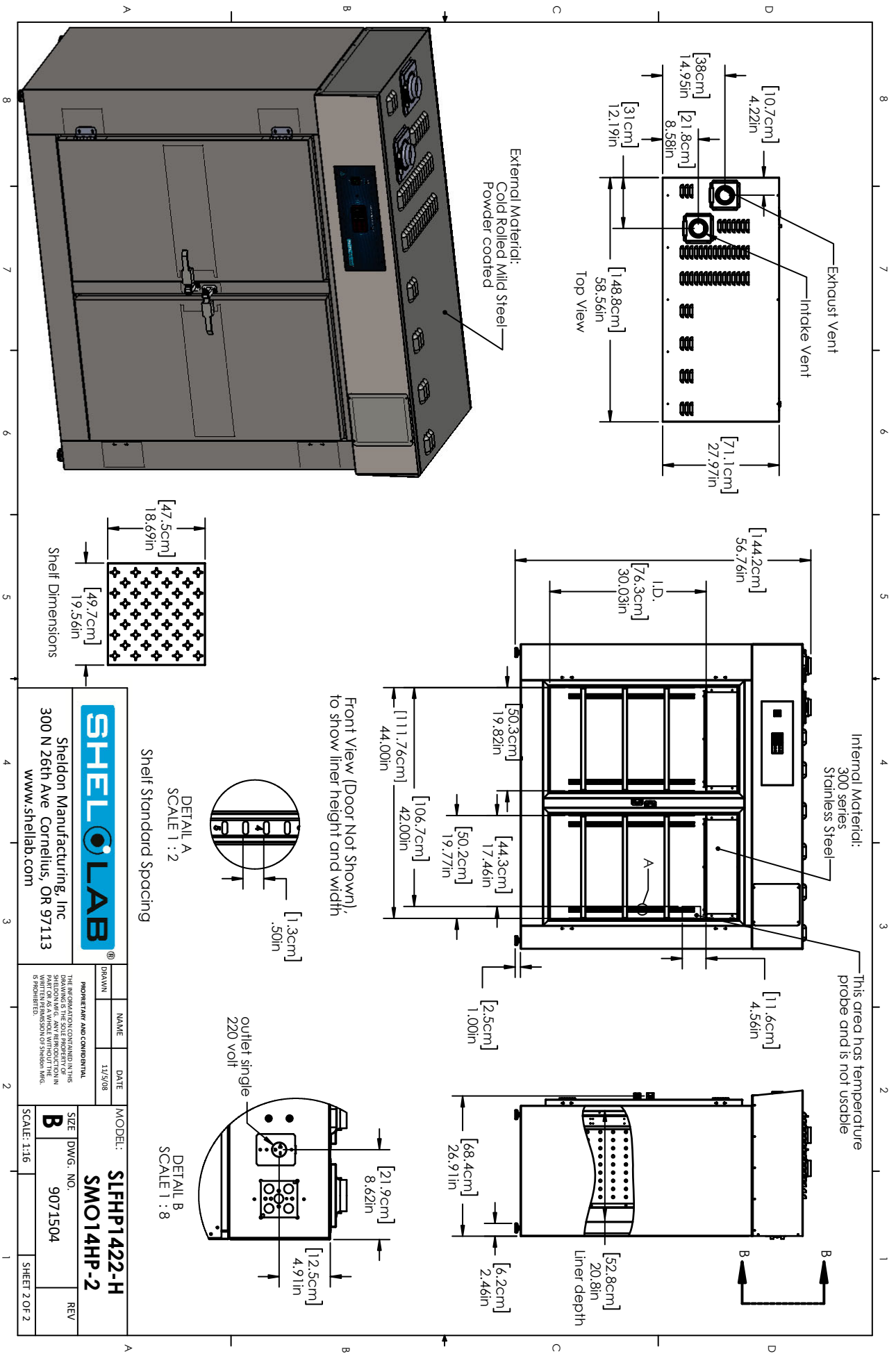
**SHELDON**  
MANUFACTURING, INC.

Learn More About Sheldon Manufacturing  
[sales@sheldonmfg.com](mailto:sales@sheldonmfg.com)  
[sheldonmanufacturing.com](http://sheldonmanufacturing.com)  
 (503) 640-3000



SHEL LAB is a Sheldon Manufacturing Brand

We reserve the right to alter specifications at any time



**SHELL LAB**  
 Sheldon Manufacturing, Inc  
 300 N 26th Ave Corvallis, OR 97113  
 www.shellab.com

DATE	11/9/08
NAME	
MODEL:	SLFHP1422-H
SIZE	B
DWG. NO.	9071504
SCALE:	1:16
REV	
MODEL:	SMO14HP-2
SIZE	B
DWG. NO.	9071504
SCALE:	1:16
REV	

PROPRIETARY AND CONFIDENTIAL  
 THE INFORMATION CONTAINED IN THIS DRAWING IS THE SOLE PROPERTY OF SHELDON MANUFACTURING, INC. AND IS TO BE USED FOR THE EXCLUSIVE USE OF THE CLIENT FOR THE PROJECT AND NOT TO BE REPRODUCED OR TRANSMITTED IN ANY FORM OR BY ANY MEANS, ELECTRONIC OR MECHANICAL, WITHOUT THE WRITTEN PERMISSION OF SHELDON MFG. IS PROHIBITED.

SHEET 2 OF 2