

SMI6-2 Microbiological Incubator



Model Name / Order Part ID	SMI6-2/SLM622-E
Capacity	5.9 cu.ft. (166 liters)
Interior Dimensions (W x D x H)	19.5" x 20.0" x 26.0" 495 x 508 x 660 mm
Exterior Dimensions (W x D x H)	25.3" x 27.3" x 38.0" 643 x 693 x 965 mm
Unit Weight	158 lb (71.7 kg)
Shipping Weight	183 lb (83 kg)
Shelves	3 standard, 12 max
Maximum Weight Per Shelf	35 lb (15.9 kg)
Permitted Total Load	105 lb (47.6 kg)
Standard Door Gasket	Vinyl
Access Port	1
Controls	Digital
Warranty	2 Year Warranty
Interior Construction	430 Stainless Steel
Exterior Construction	Painted Cold Roll Steel
Vertical Clearance	2" (51 mm)
Wall Clearance, Each Side	4" (102 mm)
Wall Clearance, Rear	4" (102 mm)

Electrical

Electrical Supply /Hz, AC, 1Ø	50/60 Hz, 220-240 AC, 4.0 Amps
Nominal Power (watts @ 37°C)	150
Plug Supplied	EU1-16P
Energy Consumption (kWh/day) - At 37°C	3.5

Temperature Range Ambient +8°C to 70°C

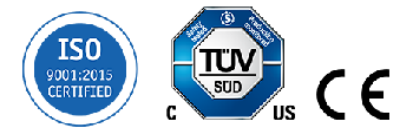
Recovery after Door Opening (30 sec.) - Minutes to 37°C	5.0
Recovery after Door Opening (60 sec.) - Minutes to 37°C	6.0

Temperature Uniformity

At 37°C	0.5
---------	-----

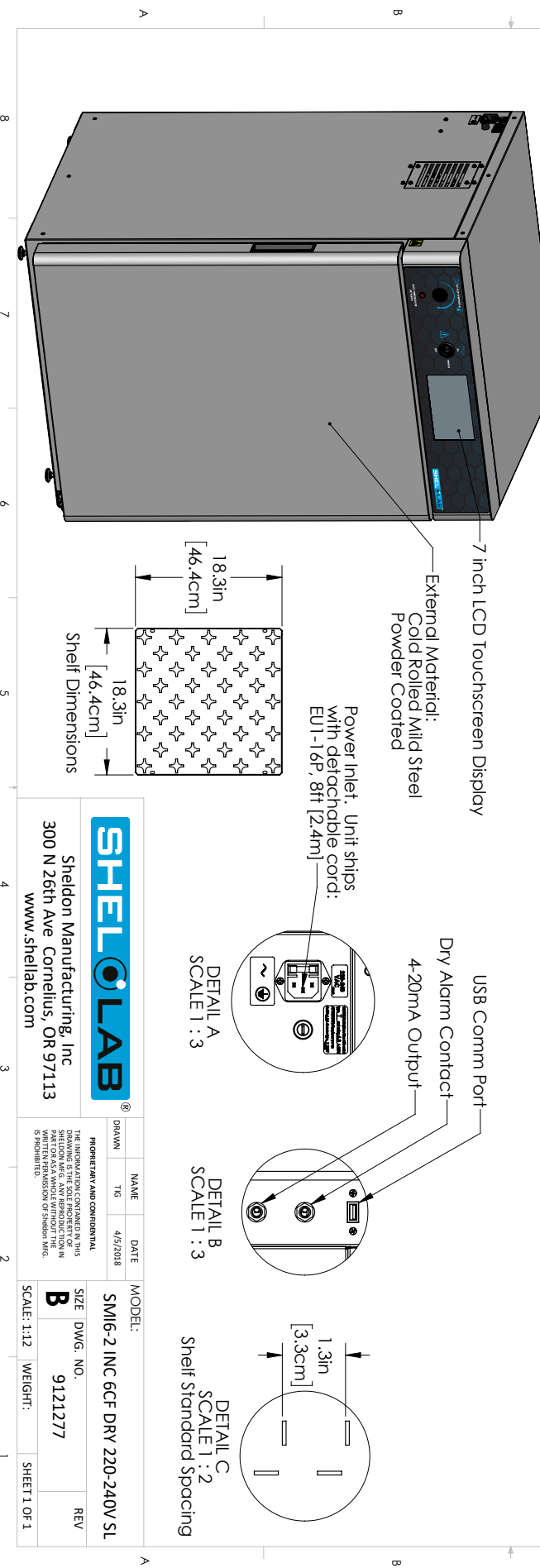
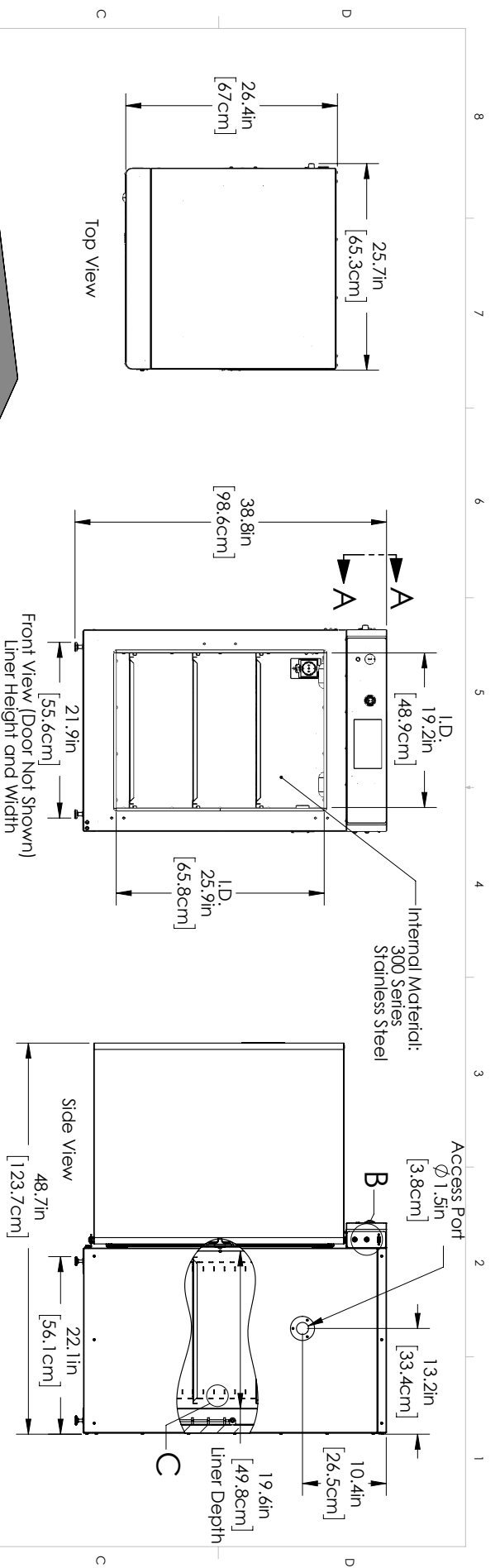


Learn More About Sheldon Manufacturing
sales@sheldonmfg.com
sheldonmanufacturing.com
 (503) 640-3000



We reserve the right to alter specifications at any time

SHEL LAB is a Sheldon Manufacturing Brand



SHELL LAB		PROPRIETARY AND CONFIDENTIAL	
Sheldon Manufacturing, Inc 300 N 26th Ave. Cornelius, OR 97113 www.shellab.com		THE INFORMATION CONTAINED IN THIS DRAWING IS THE PROPERTY OF SHELDON MANUFACTURING, INC. AND IS TO BE USED ONLY FOR THE PROJECT AND SITE SPECIFICALLY IDENTIFIED HEREIN. ANY REPRODUCTION OR TRANSMISSION OF THIS INFORMATION WITHOUT THE WRITTEN PERMISSION OF SHELDON MANUFACTURING, INC. IS PROHIBITED.	
DRAWN	NAME	DATE	MODEL:
TIG		4/5/2018	SM16-2 INC 6CF DRY 220-240V SL
SIZE DWG. NO.		SCALE: 1:12 WEIGHT:	
B 9121277		SHEET 1 OF 1	
REV			