

SMI7-2 Microbiological Incubator



Model Name / Order Part ID	SMI7-2/SLM722-E
Capacity	6.5 cu.ft. (184 liters)
Interior Dimensions (W x D x H)	23.7" x 24.0" x 20.0" 602 x 610 x 508 mm
Exterior Dimensions (W x D x H)	30.0" x 31.0" x 32.0" 762 x 787 x 813 mm
Unit Weight	162 lb (73.5 kg)
Shipping Weight	198 lb (90 kg)
Shelves	2 standard, 9 maximum
Maximum Weight Per Shelf	35 lb (15.9 kg)
Permitted Total Load	70 lb (31.8 kg)
Standard Door Gasket	Vinyl
Access Port	1
Controls	Digital
Warranty	2 Year Warranty
Interior Construction	430 Stainless Steel
Exterior Construction	Painted Cold Roll Steel
Vertical Clearance	2" (51 mm)
Wall Clearance, Each Side	4" (102 mm)
Wall Clearance, Rear	4" (102 mm)

Electrical

Electrical Supply /Hz, AC, 1Ø	50-60 Hz, 220-240 AC, 5.0 Amps
Nominal Power (watts @ 37°C)	150 watts
Plug Supplied	EU1-16P
Energy Consumption (kWh/day) - At 37°C	3.5

Temperature Range Ambient +8°C to 70°C

Recovery after Door Opening (30 sec.) - Minutes to 37°C	5.0
Recovery after Door Opening (60 sec.) - Minutes to 37°C	6.0

Temperature Uniformity

At 37°C	0.5
---------	-----

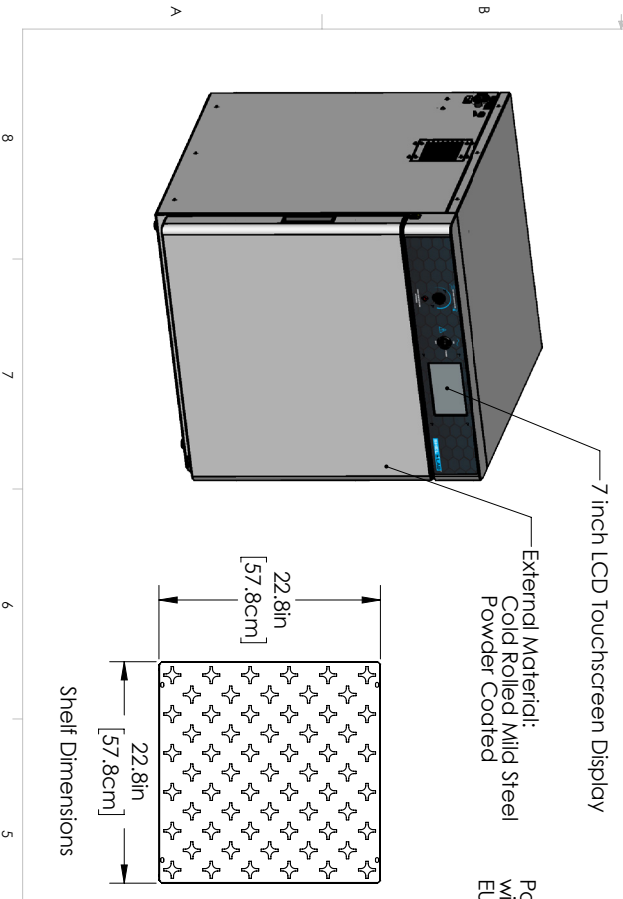
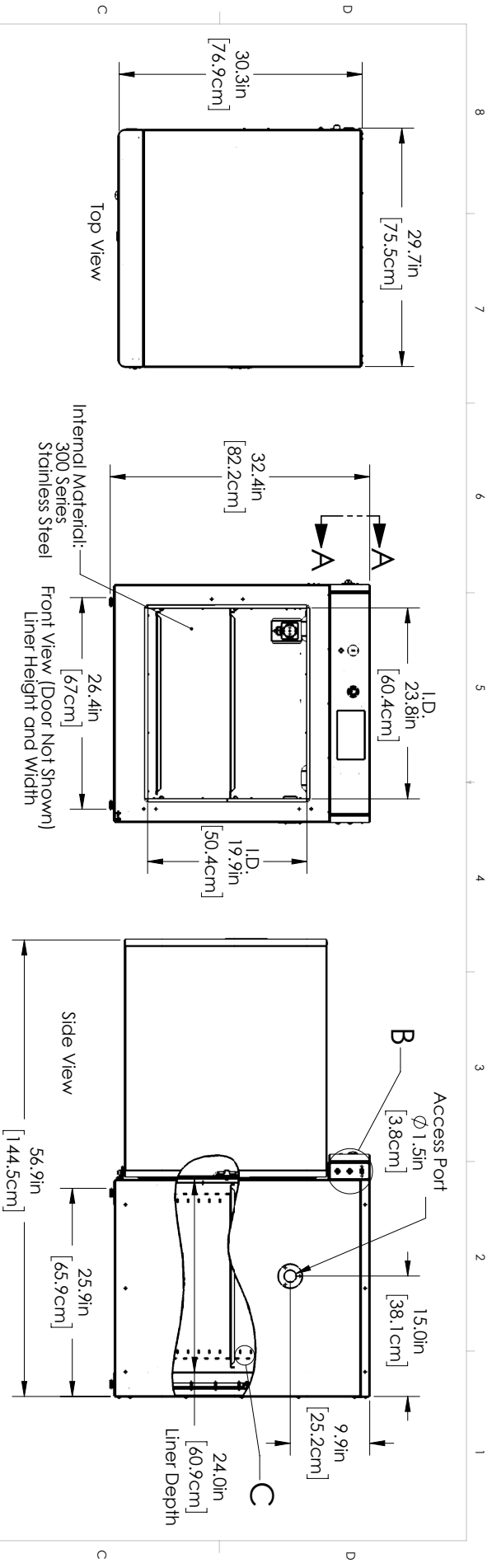


Learn More About Sheldon Manufacturing
sales@sheldonmfg.com
sheldonmanufacturing.com
 (503) 640-3000



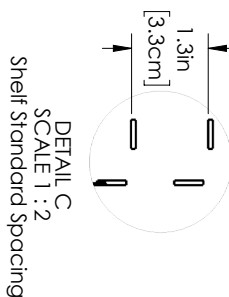
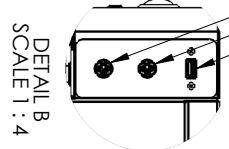
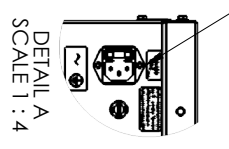
We reserve the right to alter specifications at any time

SHEL LAB is a Sheldon Manufacturing Brand



External Material:
Cold Rolled Mild Steel
Powder Coated

Power Inlet: Unit ships
with detachable cord:
EJ1-16P, 8ft [2.4m]



		Sheldon Manufacturing, Inc 300 N 26th Ave Cornelius, OR 97113 www.shellab.com	
		DRAWN: TCR NAME: TCR DATE: 3/9/2018	MODEL: SM17-2 INC 7CF DRY 220-240V SL SIZE DWG. NO.: 9121279 SCALE: 1:12 WEIGHT:
PROPRIETARY AND CONFIDENTIAL THE INFORMATION CONTAINED IN THIS DRAWING IS THE SOLE PROPERTY OF SHELDON MANUFACTURING, INC. AND IS TO BE USED ONLY FOR THE PROJECT AND AS A WHOLE ENTIRETY OF THE PROJECT AS SPECIFIED IN THE CONTRACT DOCUMENTS. NO PART OF THIS DRAWING IS TO BE REPRODUCED OR TRANSMITTED IN ANY FORM OR BY ANY MEANS, ELECTRONIC OR MECHANICAL, INCLUDING PHOTOCOPYING, RECORDING, OR BY ANY INFORMATION STORAGE AND RETRIEVAL SYSTEM, WITHOUT THE WRITTEN PERMISSION OF SHELDON MFG. COMPANY.			
SHEET 1 OF 1		REV	